

Figure 17. Fuel Tank, Pumps and Lines (Sheet 1 of 2)

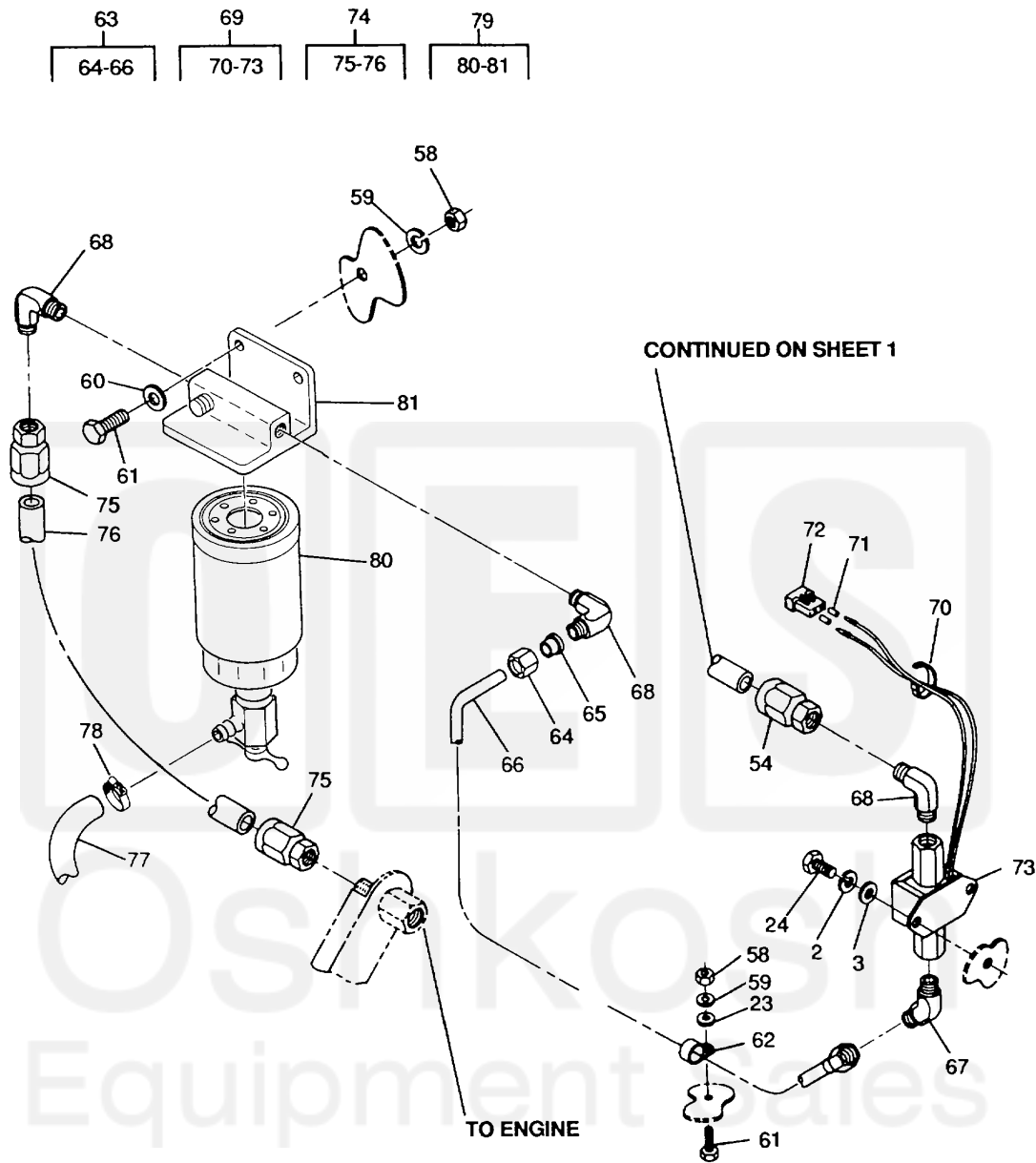


Figure 17. Fuel Tank, Pumps and Lines (Sheet 2 of 2)

ARMY TM 9-6115-641-24P  
AIR FORCE TO 35C2-3-456-14

(1) ITEM NO	(2) SMR CODE				(3) FSCM	(4) PART NUMBER	(5) DESCRIPTION AND USABLE ON CODE (UOC)	(6) QTY	(7) USMC PER EQUIP
	a. ARMY	b. AIR FORCE	c. NAVY	d. USMC					
<b>GROUP 07 - FUEL SYSTEM FIG. 17 FUEL TANK, PUMP, AND LINES</b>									
1	PAOZZ	PAOZZ			96906	MS51492-14	.SCREW MACHINE UOC: EMH	15	
2	PAOZZ	PAOZZ			96906	MS35338-62	.WASHER LOCK UOC: EMH	19	
3	PAOZZ	PAOZZ			96906	MS51412-2	.WASHER FLAT UOC: EMH	19	
4	PAOZZ	PAOZZ			36024	88-21162-1	.SWITCH LIQUID LEVEL UOC: EMH	1	
5	PAOZZ	PAOZZ			30554	88-20286	GASKET	3	
6	AOOOO	AOO			30554	88-20481	.SWITCH ASSEMBLY, FU	1	
7	PAOZZ	PAOZZ			96906	MS3367-1-9	..STRAP TIEDOWN ELECT	1	
8	PAOZZ	PAOZZ			27264	1490P1	..CONNECTOR BODY PLUG	1	
9	PAOZZ	PAOZZ			63123	35-000252-001	..CONTACT ELECTRICAL	4	
10	PAOZZ	PAOZZ			30554	88-20061	..SWITCH LIQUID LEVEL	1	
11	PAOZZ	PAOZZ			81205	2740-0003	.NUT PLAIN ASSEMBLED	2	
12	PAOZZ	PAOZZ			30554	88-20260-20	.BOLT MACHINE	2	
13	PAOZZ	PAOZZ			30554	88-20492	.FLOAT SWITCH LIQU	1	
14	XDOZZ	XB			30554	88-20324	.TUBE FUEL AUXILIA	1	
15	XAOZZ	XA			96906	MS51531B4	..NUT TUBE COUPLING	2	
16	XAOZZ	XA			96906	MS51533B4	..SLEEVE FLARED TUBE	2	
17	XAOZZ	XA			36024	999-0616-7	..TUBE	1	
18	PAOZZ	PAOZZ			81343	SAE J1508-06	.CLAMP HOSE	2	
19	MOOZZ	MOO			19099	88-20069-300	.HOSE NONMETALLIC MAKE FROM P/N 33H581 (80244), 17 INCHES REQUIRED	1	
20	PAOZZ	PAOZZ			5U990	205-605	.ADAPTER STRAIGHT TU	1	
21	PAOZZ	PAOZZ			30554	88-22755	.FILTER BODY FLUID	1	
22	PAOZZ	PAOZZ			96906	MS51504A4	.ELBOW PIPE TO TUBE	1	
23	PAOZZ	PAOZZ			96906	MS51412-5	.WASHER FLAT	1	
24	PAOZZ	PAOZZ			19207	12325869	.BOLT MACHINE	11	
25	AOOOO	AOO			30554	88-22546	.PUMP ASSEMBLY FUEL	1	
26	PAOZZ	PAOZZ			96906	MS3367-1-9	..STRAP TIEDOWN ELECT	1	
27	PAOZA	PAOZA			27264	03-09-2022	..CONNECTOR PLUG ELEC	1	
28	PAOZZ	PAOZZ			63123	35-000252-001	..CONTACT ELECTRICAL	2	
29	PAOZZ	PAOZZ			30554	88-21738	..PUMP FUEL ELECTRICA AUXILIARY	1	
30	PAOZZ	PAOZZ			81343	2-2-130238	.ELBOW 90 DEGREE	1	
31	PAOZZ	PAOZZ			81343	4-4-4 070424S	.TEE PIPE TO TUBE	1	
32	PAOZZ	PAOZZ			93742	69-539-2	.CAP TUBE	2	

ARMY TM 9-6115-641-24P  
AIR FORCE TO 35C2-3-456-14

(1) ITEM NO	(2) SMR CODE				(3) FSCM	(4) PART NUMBER	(5) DESCRIPTION AND USABLE ON CODE (UOC)	(6)	(7)
	a. ARMY	b. AIR FORCE	c. NAVY	d. USMC				QTY	USMC PER EQUIP
33	PAOZZ	PAOZZ			96906	MS87006-11	.HOOK CHAINS	2	
34	MOOZZ	MOO			30554	88-20069-196	.CHAIN ZINC MAKE FROM P/N RR-C-271TY2-CL7-16 (81348) #14 X 4 INCHES LONG	2	
35	PAOZZ	PAOZZ			79470	695	.COCK SHUTOFF SCREW	1	
36	PAOZZ	PAOZZ			30327	129-B-04X15	.COUPLING PIPE	1	
37	AOOOO	AOO			30554	88-20191-1	.HOSE ASSEMBLY	1	
38	PAOZZ	PAOZZ			96906	MS24587-4	..ADAPTER STRAIGHT TU	2	
39	MOOZZ	MOO			19099	88-20191-1-2	..HOSE NONMETALLIC MAKE FROM P/N M8794-4 (81349) 25 INCHES R EQUIRED	1	
40	PAOZZ	PAOZZ			96906	MS51500A4-4S	.ADAPTER STRAIGHT PIE TO TUBE	2	
41	PAOZZ	PAOZZ			30554	88-21117	.ADAPTER STRAIGHT PIPE	2	
42	PAOZZ	PAOZZ			30554	88-21166	.WASHER FLAT	2	
43	XDOZZ	XB			07707	A3816	.NUT	2	
44	PAOZZ	PAOZZ			81205	2740-0003	.NUT PLAIN ASSEMBLED	7	
45	PAOZZ	PAOZZ			77068	1068374-1	.CLAMP HOSE	2	
46	PAOZZ	PAOZZ			96906	MS35645-1	.CAP FILLER OPENING	1	
47	XDOOO	XB			30554	88-20193	.FILLER NECK FUEL	1	
48	PAOZZ	PAOZZ			96906	MS90908-1	..FILLER NECK	1	
49	PAOZZ	XB			30554	88-20208	.REDUCER TUBE	1	
50	PAOZZ	PAOZZ			96906	MS51860-54	.LOCKNUT TUBE FITTIN	1	
51	PAOZZ	PAOZZ			96906	MS51520A5	.ADAPTER STRAIGHT TU	1	
52	PBOZZ	PBOZZ			30554	88-21025	.TANK FUEL ENGINE	1	
53	AOOOO	AOO			30554	88-20191-4	.HOSE ASSEMBLY	1	
54	PAOZZ	PAOZZ			96906	MS24587-4	..ADAPTER STRAIGHT TU	2	
55	MOOZZ	MOO			30554	88-20191-4-2	..HOSE NONMETALLIC MAKE FROM P/N M8794-4 (81349) 34 INCHES REQUIRED	1	
56	PAOZZ	PAOZZ			96906	MS51521A4	.ELBOW TUBE	1	
57	PAOZZ	PAOZZ			30554	88-20178	.TUBE AND FITTINGS M	1	
58	PAOZZ	PAOZZ			30554	88-22790-1	.NUT PLAIN HEXAGON	3	
59	PAOZZ	PAOZZ			96906	MS25228-63	.WASHER LOCK	3	
60	PAOZZ	PAOZZ			96906	MS51412-4	.WASHER FLAT	2	
61	PAOZZ	PAOZZ			30554	88-20260-33	.BOLT MACHINE	3	
62	PAOZZ	PAOZZ			96906	MS21333-105	.CLAMP LOOP	1	
63	XDOZZ	XB			30554	88-20325-1	.TUBE FUEL PRIMARY	1	
64	XAOZZ	XA			96906	MS51531B4	..NUT TUBE COUPLING	2	
65	XAOZZ	XA			96906	MS51533B4	..SLEEVE FLARED TUBE	2	

ARMY TM 9-6115-641-24P  
AIR FORCE TO 35C2-3-456-14

(1) ITEM NO	(2) SMR CODE				(3) FSCM	(4) PART NUMBER	(5) DESCRIPTION AND USABLE ON CODE (UOC)	(6) QTY	(7) USMC PER EQUIP
	a. ARMY	b. AIR FORCE	c. NAVY	d. USMC					
66	XAOZZ	XA			36024	999-0667-4	..TUBE	1	
67	PBOZZ	PBOZZ			96906	MS51508B4-4Z	..ELBOW PIPE TO TUBE	1	
68	PAOZZ	PAOZZ			81343	4-4070202C	..ELBOW PIPE TO TUBE	3	
69	AOOOO	AOO			30554	88-20479	..PUMP ASSEMBLY FUEL	1	
70	PAOZZ	PAOZZ			96906	MS3367-1-9	..STRAP, TIEDOWN ELECT	1	
71	PAOZZ	PAOZZ			63123	35-000252-001	..CONTACT ELECTRICAL	2	
72	PAOZA	PAOZA			27264	03-09-2022	..CONNECTOR PLUG ELEC	1	
73	PAOZZ	PAOZZ			72850	40193	..PUMP FUEL ELECTRICA MAIN	1	
74	AOOOO	AOO			30554	88-20191-2	..HOSE ASSEMBLY	1	
75	PAOZZ	PAOZZ			96906	MS24587-4	..ADAPTER STRAIGHT TU	2	
76	MOOZZ	MOO			30554	88-20191-2-2	..HOSE NONMETALLIC MAKE FROM P/N M8794-4 (81349) 17 INCHES REQUIRED.	1	
77	MOOZZ	MOO			30554	88-20069-172	..HOSE NONMETALLIC MAKE FROM P/N 483666(02280) 32.0 INCHES REQUIRED	1	
78	PAOZZ	PAOZZ			28520	2326	..CLAMP HOSE	1	
79	PBOOO	PBOOO			30554	88-21101	..ITEM SPECIAL	1	
80	PAOZZ	PAOZZ			76700	85285-F	..FILTER FLUID	1	
81	XAOZZ	XA			76700	Q-54382	..HEAD FILTER	1	
82	PAOZZ	PAOZZ			01276	2018-2-4S	..ADAPTER STRAIGHT PIPE	1	
83	PAOZZ	PAOZZ			93061	125 HB-2-2	..ADAPTER STRAIGHT	1	

END OF FIGURE

Oshkosh  
Equipment Sales